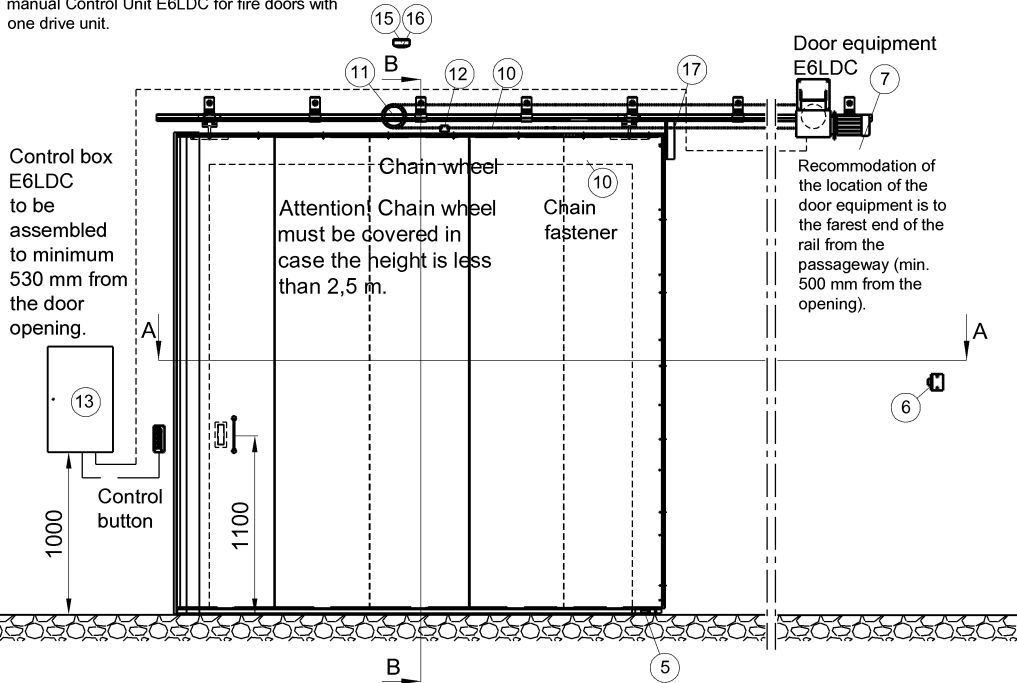


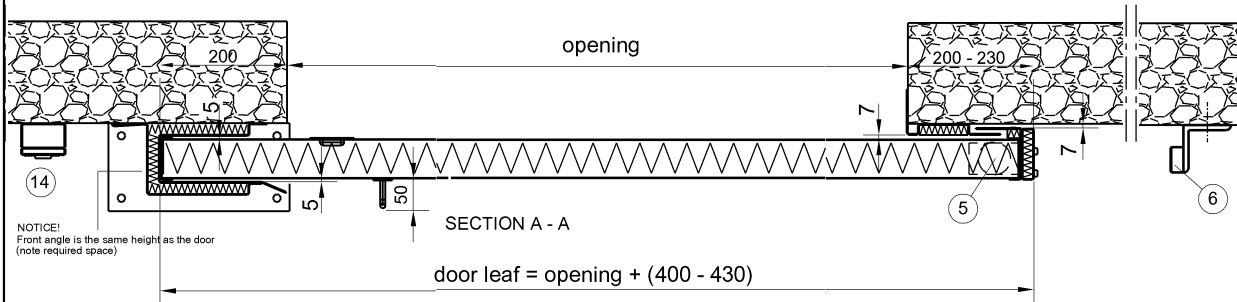
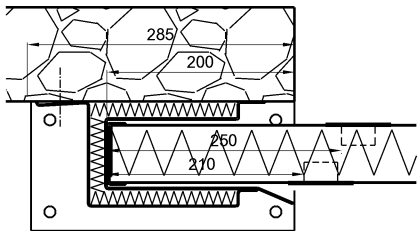
The instructions by Saajos Oy must be followed with the locations. See also users manual Control Unit E6LDC for fire doors with one drive unit.

Smoke detectors to be positioned acc. to drwg. SA-20914.

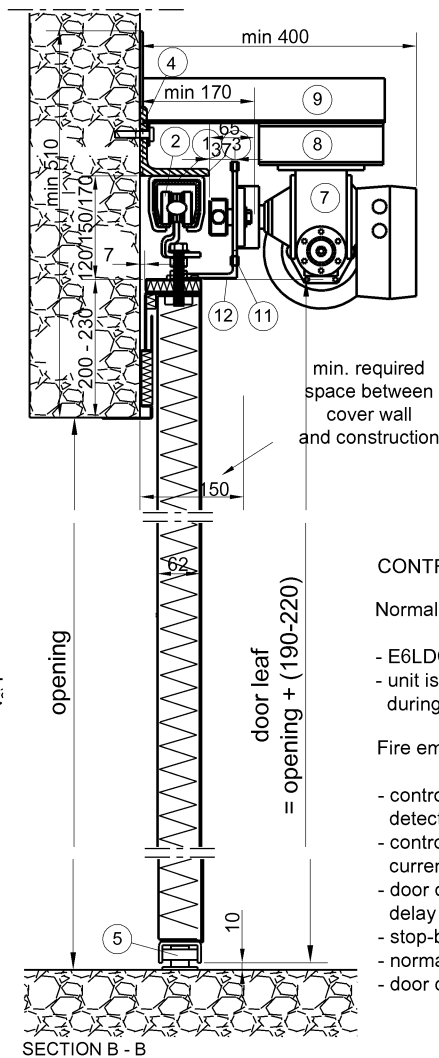


For installation the wall must be levelled at least 200 mm from the edges of the opening. In case the wall is constructed with boards, there must be reinforcements inside the wall 200 mm from the vertical edges and 400 mm from the top edge of the opening.

SECTION A - A (Alternative to the door puller)



NOTICE!  
Front angle is the same height as the door  
(note required space)



Part	Qty	Name, material, measures, model	Drwg./Part no.
1	1 pc.	Sliding rail, Sasmator	
2	pc.	Sliding rail, Sasmator	
3	pc.	Weld fastener, Sasmator	
4	pc.	Fastening corner L-10x100x100-60	
5	1 pc.	Lower guide wheel, Fe	
6	1 pc.	Stopper, Fe + rubber	
7	1 pc.	Equipment for sliding doors E6LDC, Ovitior Oy	
8	1 pc.	Bed for equipment, Fe 170 x 230, Ovitior Oy	
9	1 pc.	Installation part, Fe	
10	m	Chain 1/2" x 5/16" Ovitior Oy	
11	1 pc.	Chain wheel, Fe z=28 1/2" x 5/16", Ovitior Oy	
12	1 pc.	Chain support for door, Ovitior Oy	
13	1 pc.	Control box E6LDC, 600 x 400 x 200, Ovitior Oy	
14	2 pcs.	4-button (Open - Stop - Close - Safety open), Ovitior Oy	
15	2 pcs.	Smoke detector, Ovitior	
16	2 pcs.	Support for smoke detector, Ovitior	
17	1 pc.	Support, 25041-1 T-7x60x60-250	
18	1 pc.	E120 Manufacturer's plate	

**CONTROL OF THE FIRE EMERGENCY CLOSING EQUIPMENT:**


Normal situation:

- E6LDC controlled door may be opened and closed with control button
- unit is equipped with a clutch that enables the free movements of the door e.g. during installation. Use of the clutch must be monitored and may not be left free

Fire emergency situation:

- control unit gets potential free indication of the emergency e.g. from the smoke detector or push button
- control unit closes the door using a power source independent from the mains current (DC battery back-up)
- door opens to the required passageway and closes automatically after adjustable delay when a safety open button is pressed
- stop-buttons must be anti-locking
- normal open -function is skipped
- door closes at the speed of ~ 0,1 m/s

FINISHING: Powder painting (PE, EP/PE) or wet paint (EPPUR)

	Translated	2017-11-20 KM
Revision	Description	Designer
	Customer	Designer
		08.03.2012 CA
		Project
		Drwg. no.
	E 120, EI <sub>160</sub> EI <sub>290</sub> sliding fire door E6LDC control (machine control)	SA-25992_EN
	Max. type approved door size 55,7 x 49,42M (6000mm x 5162mm)	Based on drwg no.
	Mass of the door ~ 50kg/m <sup>2</sup>	SA-25264